

MIDER

An elderly woman with intermittent and progressive abdominal pain

Item Type	Article
Authors	Malik, Adnan Ather;Mahdi, Dana;Yosief, Lydia Salem;Butt, Umar;Luckiewicz, Andrzej;Cassidy, Aaron;Merchant, Fraser;Ali, M Adam
Citation	Malik AA, Mahdi D, Yosief LS, Butt U, Luckiewicz A, Cassidy A, Merchant F, Ali MA. An elderly woman with intermittent and progressive abdominal pain. J Am Coll Emerg Physicians Open. 2021 Jul 31;2(4):e12504. doi: 10.1002/emp2.12504.
DOI	10.1002/emp2.12504
Publisher	John Wiley & Sons, Inc
Rights	Creative Commons Attribution-NonCommercial-NoDerivatives 4.0 International
Download date	2026-06-06 10:35:58
Item License	https://creativecommons.org/licenses/by-nc-nd/4.0/
Link to Item	http://hdl.handle.net/20.500.14200/5858

IMAGES IN EMERGENCY MEDICINE

Gastroenterology

An elderly woman with intermittent and progressive abdominal pain

Adnan Ather Malik BMBS, BMedSci (Hons)¹ | Dana Mahdi BSc² |
Lydia Salem Yosief BSc² | Umar Butt BMBS, BMedSci (Hons)³ | Andrzej Luckiewicz MBBS,
BSc (Hons)⁴ | Aaron Cassidy MBChB, BSc¹ | Fraser Merchant MBBS, BSc⁵ |
M. Adam Ali MBBS, BSc⁶

¹ Department of Urology, George Eliot Hospital National Health Service (NHS) Trust, Nuneaton, UK

² King's College London Medical School, London, UK

³ Department of Surgery, Glenfield Hospital, Leicester, UK

⁴ Department of General Surgery, George Eliot Hospital NHS Trust, Nuneaton, UK

⁵ Gloucestershire Hospitals NHS Foundation Trust, Gloucester, UK

⁶ Institute of Ophthalmology, University College London, London, UK

Correspondence

Dana Mahdi, BSc, King's College London Medical School, 1 Robinwood Place, London, SW15 3SE, UK.
Email: dana.mahdi@kcl.ac.uk

1 | CASE PRESENTATION

An 89-year-old woman attended the emergency department with vomiting and constipation of 1-week duration associated with progressively increasing abdominal pain. Examination demonstrated generalized abdominal tenderness with no evidence of peritonism. Laboratory studies revealed a white cell count of 12,200 per cubic millimeter (4000–11,000). Abdominal radiography was undertaken due to a suspicion of bowel obstruction and demonstrated Rigler's triad: dilated loops of small bowel (Figure 1, blue arrow) on the left of the abdomen, pneumobilia (Figure 1, red arrow), and a faint focus of calcification projected over the left iliac bone (Figure 1, purple arrow). Computed tomography of the abdomen and pelvis was subsequently undertaken. Signed consent was obtained from the patient.

2 | DIAGNOSIS

2.1 | Gallstone ileus

Computed tomography demonstrated a small bowel obstruction with a transition point at a 17-millimeter calcified stone (Figure 2, pur-

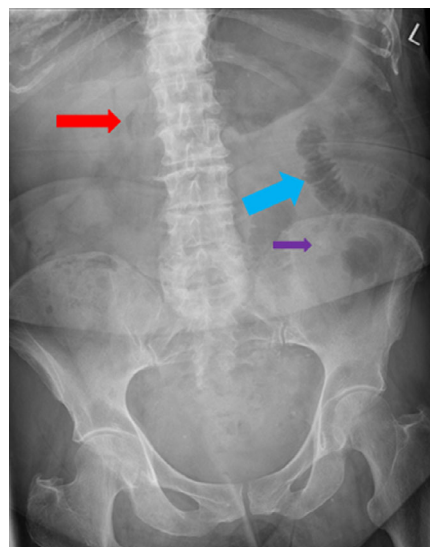


FIGURE 1 Plain abdominal radiograph demonstrating Rigler's triad

ple arrow) with air in the biliary tree (Figure 2, red arrow) and gallbladder. Emergent laparoscopic enterotomy was undertaken, and the

This is an open access article under the terms of the [Creative Commons Attribution-NonCommercial-NoDerivs](https://creativecommons.org/licenses/by-nc-nd/4.0/) License, which permits use and distribution in any medium, provided the original work is properly cited, the use is non-commercial and no modifications or adaptations are made.

© 2021 The Authors. *JACEP Open* published by Wiley Periodicals LLC on behalf of American College of Emergency Physicians

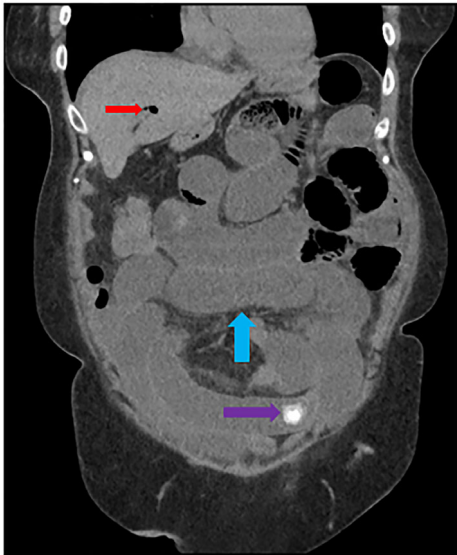


FIGURE 2 Abdominal and pelvic computed tomography showing bowel obstruction with a transition point at a 17-millimeter gallstone. Pneumobilia is also seen

gallstone was removed from the mid-ileum. The patient had an unremarkable post-operative recovery.

Gallstone ileus represents an uncommon complication of cholelithiasis. Ordinarily, it results from adhesions between the inflamed gallbladder wall and adjacent bowel, which leads to a cholecysto-enteric fistula, allowing direct access of gallstones to the gastrointestinal tract. As in this case, presentation can be intermittent and non-specific over several days due to the "tumbling phenomenon" as the stone progresses through different parts of the gastrointestinal tract causing transient gallstone impaction at different sites.¹ It is more common in women and with advancing age, and the most common site of its final eventual impaction is the ileum in up to 60% of cases.²

REFERENCES

1. Abich E, Glotzer D, Murphy E, Gallstone ileus: an unlikely cause of mechanical small bowel obstruction. *Case Rep Gastroenterol.* 2017;11(2):389-395.
2. Inukai K. Gallstone ileus: a review. *BMJ Open Gastroenterol.* 2019; 6(1): e000344.

How to cite this article: Malik AA, Mahdi D, Yosief LS, et al. An elderly woman with intermittent and progressive abdominal pain. *JACEP Open.* 2021;2:e12504.
<https://doi.org/10.1002/emp2.12504>.